

Crown
Commercial
Service
Supplier



RM3788 Wider Public Sector Legal Services

SHARPE
PRITCHARD

HOWES
PERCIVAL

DELIVERING THE BEST LAWYER FOR YOU, NOT JUST THE BEST IN OUR FIRM

We are a consortium of two firms, Sharpe Pritchard and Howes Percival LLP, with broad reaching capabilities, working across government and the private sector. We are further supported by PwC and Cardiff-based Capital Law, will support us in a sub-contractor role.

We have a unique breadth and depth of expertise, people, scalable legal solutions and specialist knowledge from across our firms to deliver integrated expert support.

We have an advantage over traditional law firms due to the breadth of capability we can access, ensuring that we can provide you with the best legal service for your needs.

You will receive a seamless, unified service and can engage directly with our consortium, via our representatives, Julia Rudin (Sharpe Pritchard), Alison Kirby (Howes Percival) or go directly to any single firm or lawyer that you want to engage.



JULIA RUDIN
Managing Partner
+44 (0)20 7061 5952
jrudin@sharpepritchard.co.uk



ALISON KIRBY
Partner
01603 281956
alison.kirby@howespercival.com



CONTENTS

MANDATORY LEGAL SPECIALISMS		OPTIONAL LEGAL SPECIALISMS	
ADMINISTRATIVE AND PUBLIC LAW	2	EU	2
BANKING AND FINANCE	2	PLANNING	2
COMPETITION LAW	2	PROJECTS	2
CONTRACTS	2	RESTRUCTURING AND INSOLVENCY	2
DATA PROTECTION AND INFORMATION LAW	2	EDUCATION LAW	2
CORPORATE AND M&A	2	CHILD LAW	2
INFORMATION TECHNOLOGY	2	FOOD, RURAL AND ENVIRONMENTAL AFFAIRS	2
EMPLOYMENT	2	ENERGY AND NATURAL RESOURCES	2
INTELLECTUAL PROPERTY	2	HEALTH AND HEALTHCARE LAW	2
INFRASTRUCTURE	2	FRANCHISE LAW	2
OUTSOURCING / INSOURCING	2	TELECOMMUNICATIONS	2
LITIGATION AND DISPUTE RESOLUTION	2	LIFE SCIENCES	2
PENSIONS	2	HEALTH & SAFETY LAW	2
PARTNERSHIPS	2	CHARITIES LAW	2
PUBLIC PROCUREMENT	2	TRANSPORT LAW (EXCLUDING RAIL)	2
PROPERTY, REAL ESTATE & CONSTRUCTION	2	LICENSING LAW	2
TAX	2		



ADMINISTRATIVE AND PUBLIC LAW

We bring market leading experience in the field of administrative and public law. We are a leading firm in undertaking work in the administrative court. We have advised a wide variety of public bodies on a range of constitutional issues. We have significant experience in advising on powers relating to decision-making including steps needing to be taken to minimise the risk of challenges by way of judicial review. This includes advice on consultation and equality impact assessments. We also have long experience of acting in connection with election petitions and advising on the conduct of elections.

CASE STUDY - Sharpe Pritchard advised a Police and Crime Commissioner who wanted to perform the fire and rescue functions in their area on (i) the consultation requirements of the relevant legislation, (ii) whether the PCC's proposals satisfied those requirements and (iii) the steps needed under the legislation to prepare. The PCC was able to place itself in a good position with a well thought out plan to perform fire and rescue functions and launch a robust consultation exercise which complied with the legislation.



JOHN SHARLAND

Partner

020 7405 4600

jsharland@sharpepritchard.co.uk



John advises clients on the interpretation of legislation and on public law generally, including vires and process. He advises public bodies on their powers and duties. He frequently advises on issues relating to consultation and compliance with equality duties.



MARI ROBERTS

Senior Associate

020 7405 4600

mroberts@sharpepritchard.co.uk



Mari is a litigation lawyer who acts mainly for public authorities in all types of dispute resolution across all tribunals, including contractual disputes dealt with by way of adjudication or expert determination, and cases which have gone to mediation. She also has specialist knowledge on the adjudication process and is a member of our adjudication advice team.

BANKING AND FINANCE

We have considerable depth of expertise in a diverse range of areas which allows us to look beyond our deals or projects to understand your business sector. This is so that we can understand your business and focus on your needs. Our banking and finance team recognises challenges by current and future market trends. With our expertise and experience, we can help meet your objectives. The team regularly acts for borrowers, lenders and investors, allowing us to understand the needs and pitfalls of any transaction. We will work as part of your team to provide clear and practical advice to meet your business requirements.

CASE STUDY - Howes Percival acted for a lender lending £4.08 million of development finance in connection with the construction of 41 new apartments with a gross developed value of £9.28 million, including provision of suitable construction warranties to the Bank. Deed of Priority required giving Bank's charge priority over an existing charge. Advice required in connection with access issues and restrictive covenants which needed to be dealt with prior to completion. Also acting for a UK challenger bank. Acted on numerous secured lending, including a number of property developers, lending £750,000 to £5 million.



DANIEL BANTON

Partner

0116 2473510

daniel.banton@howespercival.com



Daniel has considerable experience in all types of corporate transactional work including: private equity, investment based transactions, banking, finance/funding work, and corporate reorganisations/ restructurings.



GERALD COULDRAKE

Senior Partner and

Head of Corporate and Commercial

01604 258011

gerald.couldrake@howespercival.com



Gerald regularly acts for high street banks and private lenders in relation to acquisition finance, secured and unsecured lending, and have experience of advising in relation to property development finance. Gerald counts the likes of HSBC, Handelsbanken, BGF and Natwest as his clients. Gerald is also experienced in negotiating with such lenders when he acts for his clients as they seek funding opportunities.



KATHERINE CEREGHINO

Associate

0116 2473540

katherine.cereghino@howespercival.com



Katherine is an associate solicitor in the Corporate, Commercial and Banking team. Katherine advises on company disposals and acquisitions, share arrangements, company restructuring and reorganisations and company finance documentation. Katherine also has a background advising clients in relation to commercial property which is very helpful when dealing with company sales and purchases.

CONTRACTS

We ensure that our public sector clients can demonstrate that they are getting best value both in the works, goods and services they are procuring and the contractual arrangements they enter into generally.

Our consortium contains specialist commercial contracts lawyers that combine a strong technical knowledge of all aspects of contract law with extensive practical experience of commercial and operational issues that arise before and after contract signature across a broad range of sectors. For a number of local authorities, we carry out all routine contract formation work. This is particularly efficient where it allows us to invest time in setting up integrated systems with the client to ensure the client's internal reporting and contracting codes are followed as a matter of course.

CASE STUDY - Sharpe Pritchard has significant experience of advising the wider public sector on the procurement, formation and operation of a wide range of commercial contracts, including facilities management (e.g. cleaning, catering, repairs and maintenance), construction, ICT, leisure, housing management, shared services and framework arrangements.



TIM FARR

Partner

020 7405 4600

tfarr@sharpepritchard.co.uk



Tim specialises in procurement and strategic public private partnerships. His clients include private and corporate companies, central government departments, local authorities, registered housing providers and voluntary bodies. Tim frequently advises clients on administrative law, education, housing and outsourcing projects and advises such bodies on a wide range of contracts.



JANE CREES

Partner

020 7405 4600

jcrees@sharpepritchard.co.uk



Jane specialises in public procurement law and contracts. She regularly advises on a wide range of complex works and services contracts, including in relation to facilities management and major contracts for leisure and education facilities. She is fully familiar with the JCT and NEC3/4 suites of contracts, among other standard construction forms.

COMPETITION LAW

We have core competition lawyers who cover the whole range of specialist advice on international, EU and national competition law, including cartels, abuse of a dominant market position, merger control, state aid and sector inquiries. Many of our clients are affected by the EU rules restricting the provision of financial and other assistance to organisations in a way that would distort fair competition. As such, we have accumulated a wealth of experience in advising on matters relating to state aid and when it can be validly given. We are able to use our years of experience of advising aid providers and recipients to propose suitably tailored routes to state aid compliance for clients with particular desired outcomes.

CASE STUDY - Sharpe Pritchard advised a local authority on its participation in and funding of a company to deliver improved broadband and Wi-Fi and a joint venture company to redevelop part of the main town in its area, with particular emphasis on state aid and competition law issues.



PAUL O'SULLIVAN

Partner

020 7405 4600

posullivan@sharpepritchard.co.uk



Paul is a highly experienced contracts solicitor and has particular expertise in EU procurement and state aid law. He advises in complex and often politically sensitive public sector project work, including in the health & social security, highways & transportation, education and social services sectors across a wide range of delivery models and contract types.



PETER COLLINS

Partner

020 7405 4600

pcollins@sharpepritchard.co.uk



As part of the Projects team, Peter advises public, private and third sector clients on corporate and company law matters. He has considerable experience advising clients on company acquisitions and disposals, private equity investments, fundraisings, group reorganisations, board governance matters and shareholder issues.



EDWARD LEE

Partner

01908 872203

edward.lee@howespercival.com



Edward's primary practice is M&A, but he also has considerable experience in other corporate transactions and documents. He undertakes significant large and complicated cross-border transactions and is very experienced in deals involving SaaS and not for profit businesses.

CORPORATE AND M&A

We bring an extensive wider corporate capability that covers the whole range of corporate legal services, including all aspects of company law, public and private company transactions (including mergers & acquisitions and corporate finance), share acquisitions, disposals, capitalisations, entity selection, venture capital advice and operating agreements.

Our consortium can provide company secretarial services and advise on all aspects of corporate governance, including directors' duties, securities and other related governance matters. Our clients include listed and unlisted multinational organisations, quasi-government organisations in various sectors including healthcare, technology, retail, financial services, media and pharmaceuticals.



GERALD COULDRAKE

Senior Partner and
Head of Corporate and Commercial
01604 258011
gerald.couldrake@howespercival.com



Gerald regularly acts for high street banks and private lenders in relation to acquisition finance, secured and unsecured lending, and has experience of advising in relation to property development finance. Gerald counts the likes of HSBC, Handelsbanken, BGF and Natwest as his clients. Gerald is also experienced in negotiating with such lenders when he acts for his clients as they seek funding opportunities.



EDWARD LEE

Partner
01908 872203
edward.lee@howespercival.com



Edward's primary practice is M&A, but he also has considerable experience in other corporate transactions and documents. He undertakes significant large and complicated cross-border transactions and is very experienced in deals involving SaaS and not for profit businesses. As well as corporates, he regularly advises financial institutions, small VCs/PE houses, HNWI and particularly management teams in relation to primary or secondary buy outs.



PETER COLLINS

Partner
020 7405 4600
pcollins@sharpepritchard.co.uk



As part of the Projects team, Peter advises public, private and third sector clients on corporate and company law matters. He has considerable experience advising clients on company acquisitions and disposals, private equity investments, fundraisings, group reorganisations, board governance matters and shareholder issues.

DATA PROTECTION AND INFORMATION LAW

We have a team of data protection, privacy and information solicitors that has experience of a vast array of issues in this fast-changing area of law. This includes advising on data protection, privacy, freedom of information, online communications, web accessibility and regulatory matters, together with advising on privacy protection in the context of the European Convention on Human Rights. We can assist in other areas such as privacy enhancing technologies, policies and procedures, and represent clients in cases of misuse of private information or breaches of confidence. We also frequently advise upon compliance with the Freedom of Information Act, the Environmental Information Regulations and similar legislation, including supporting our clients during investigations by the Information Commissioner and when responding to requests for information.



GEMMA TOWNLEY

Partner
020 7405 4600
gtownley@sharpepritchard.co.uk



Gemma is experienced in advising on data protection issues including on a wide range of compliance issues with respect to the GDPR and Data Protection Act 2018, including drafting privacy notices, assisting with DPIAs, data processing agreements, information sharing agreements and contractual compliance. Gemma also advises clients on freedom of information issues, including requests and advising on ICO decisions.



JULIA RUDIN

Managing Partner
020 7061 5952
jrudin@sharpepritchard.co.uk



Julia specialises in advising the public sector on PFI and PPP projects and major outsourcing and shared services contracts, administrative and technology law. Julia regularly advises on large scale and complex public procurements. These cover a wide range of legal issues including intellectual property rights and software licensing, data security, risk transfer, limits on liability and other issues which arise during the contractual process.



JAMES HOWARTH

Partner
01908 872207
james.howarth@howespercival.com



James has been involved in various contentious data protection matters over the years, including a High Court trial, litigation for personal damages and rectification against a local authority and advising a regulatory body on a potential breach of highly sensitive personal data. James has handled various SAR applications (bringing and responding) and is Howes Percival's GDPR compliance lead.

EMPLOYMENT

We are experts in providing tailored, commercial employment law and HR advice. We pride ourselves in providing cost effective solutions to your employment law and HR needs. Our expert employment solicitors ensure that our clients comply with the latest employment regulations. They draft and update terms conditions of service, including for atypical employment models, policies and procedures or staff handbooks. In the event of a problem heading towards an employment tribunal, we advise and support our clients' HR team at every stage of the case.

Our consortium can provide particular expertise in large scale projects (PFI and PPP), shared services and restructuring, so our employment lawyers are experienced in providing TUPE advice on outsourcing arrangements. They also have expertise in the local and central government pension schemes especially in the context of outsourcing.



ROSE SUNTER

Partner

020 7405 4600

rsunter@sharpepritchard.co.uk



Rose acts for employers in the public and private sectors, including local government, and sometimes for employees on a full range of employment related issues. Her work includes advising on the terms of employment contracts; employment status; policies and procedures and their implementation; public sector equality duties; disciplinary, capability and grievance investigations; compromise agreements; and employment tribunal claims including unfair dismissal, discrimination.



PAULA BAILEY

Partner and Head of the Employment

0116 2473518

paula.bailey@howespercival.com



Paula has extensive experience in all aspects of employment law, both contentious and non-contentious. She provides commercial and practical advice to a wide range of businesses and has developed particular expertise in outsourcing, TUPE, redundancies and restructuring programmes. Paula regularly presents seminars and provides in-house training on employment law issues.



SIMON DEMAID

Partner

01908 872202

simon.demaid@howespercival.com



Simon provides support and assistance with employment related problems. He has a particularly specialism in assisting clients with disciplinary matters, grievances, ill health and discrimination issues; Simon also advises on disability discrimination claims, Simon takes a pro-active role in managing Tribunal claims for his clients, including advocacy at Tribunal hearings.

INFORMATION TECHNOLOGY

We have a specialist team that has extensive experience in advising on ICT outsourcing - whether as a standalone ICT procurement or as part of a wide ranging facilities management contract, business process outsourcing or PFI/PPP project.

Our solicitors advise on all aspects of the procurement process for complex telecoms projects, technology hardware and software licensing. ICT outsourcing has many advantages, both financially and as a driver of service levels. Our technology team also understand how important it is to deliver these IT solutions as cost-effectively as possible, whilst ensuring that service levels are not unduly disrupted during implementation.

CASE STUDY - Howes Percival are instructed as sole representatives in the UK on behalf of the BSA whose members including Microsoft, Adobe, Siemens, Autodesk and many other software companies. We act against UK based companies who are not properly licensed when using the software of the likes of Microsoft and other BSA members listed above. Much of the software in use is either pirated or illegally downloaded from the internet or simply being used on more computers than they have licenses for.



GEMMA TOWNLEY

Partner and Head of Technology and Data

020 7405 4600

gtownley@sharpepritchard.co.uk



Gemma is a partner in the technology and data law team and specialises in advising on public sector procurement and a wide range of complex contracts. Gemma advises on complex IT procurements and contracts, public procurement issues at all stages of the process, and is regularly instructed on data protection, freedom of information and intellectual property rights.



JULIA RUDIN

Managing Partner

020 7061 5952

jrudin@sharpepritchard.co.uk



Julia specialises in advising the public sector on PFI and PPP projects and major outsourcing and shared services contracts, administrative and technology law. Julia regularly advises on large scale and complex public procurements, including for complex IT services. These cover a wide range of legal issues including intellectual property rights and software licensing, data security, risk transfer, limits on liability and other issues which arise during the contractual process

INFRASTRUCTURE

We have advised on some of the most significant and complex infrastructure deals in the UK in the last decade.

We advise on all aspects, including end to end advice on strategy, procurement, land assembly, planning, parliamentary, regulation, contracts, finance, joint ventures and construction. We act for local and central government, utilities, contractors and major landowners. As Roll A Parliamentary Agents, we can also provide an added level of experience for promoters and opponents of major infrastructure schemes.

CASE STUDY - Sharpe Pritchard advised Thames Water on the procurement programme for Thames Tideway Tunnel (the “super sewer”), a UK government “top 40” infrastructure project valued at £4.2B. We advised on over 40 separate procurements and contracts including the procurements of the main works contracts for the tunnel, the enabling and early works contracts, the system-wide frameworks and system integrator contract and on the procurement for infrastructure provider itself.



NICOLA SUMNER

Partner and Head of Infrastructure
020 7061 5955
nsumner@sharpepritchard.co.uk



Nicky heads the infrastructure group at Sharpe Pritchard. She has over 20 years' experience of advising on complex procurements, infrastructure projects, outsourcing projects, PPP and PFI projects, commercial contracts and public law. She advises in a wide range of sectors including central government, local government, utilities, rail, road and waste. Nicky advises on both PCR and UCR regimes.



ROSEANNE SERRELLI

Partner
020 7061 5953
rserrelli@sharpepritchard.co.uk



Roseanne is Head of Projects and Strategy at Sharpe Pritchard. Roseanne is a highly experienced projects, infrastructure and procurement lawyer who has worked on some of the UK's most innovative and complex projects for the public sector. With over 20 years' experience in the field, Roseanne brings expertise relating to all aspects of project delivery from strategy to execution. She specialises particularly in complex environmental infrastructure projects from energy to waste, sewage and the built environment.

INTELLECTUAL PROPERTY

We have a leading intellectual property offering across the consortium which combines a genuine expertise with a responsive, client-focused approach to ensure that your intellectual property is properly protected and exploited.

We are able to give you practical, commercial and cost-sensitive advice across a range of business sectors. Our wide-ranging expertise in this key area covers copyright, moral rights, trade marks (including their registration), licensing, software development and publishing, data protection and processing, confidential information and trade secrets. Our IP team also handles an extensive caseload of litigation in the English High Court, the Intellectual Property and Enterprise Court and the European Courts, as well as the UK and European intellectual property offices.



MATTHEW TALBOT

Partner
0116 2473514
matthew.talbot@howespercival.com



Matthew specialises in all areas of UK and European Intellectual Property law, particularly contentious matters. He advises clients regarding trademarks, copyright, design rights, passing off, patents, European food protection and defamation. He also has substantial experience in IT disputes and has frequently appeared before the English Courts, the European Court of Justice and the UK and European Patent Offices.



JAMES HOWARTH

Associate
0116 2473540
katherine.cereghino@howespercival.com



James has been involved in various contentious data protection matters over the years, including a High Court trial, litigation for personal damages and rectification against a local authority and advising a regulatory body on a potential breach of highly sensitive personal data. James has handled various SAR applications (bringing and responding) and is Howes Percival's GDPR compliance lead.



RAJ SHAH

Associate
020 7405 4600
rshah@sharpepritchard.co.uk



Raj advises on software licensing and maintenance support agreements, non-disclosure/confidentiality agreements, website terms and conditions, privacy and cookie policies, and intellectual property assignments and licences. He also specialises in protecting and commercially exploiting clients' intellectual property, and frequently advises on copyright issues and trade mark registration and licensing, both domestically and internationally.

LITIGATION AND DISPUTE RESOLUTION

We have a large and active team across the consortium which boasts a significant number of clients are public sector bodies including central government, London boroughs and a broad range of local authorities and public bodies throughout the country. Our dispute resolution team also has wide experience in all dispute resolution processes including litigation, arbitration, expert determination, mediation and expert adjudication advice. This includes very high profile litigation cases, and has instigated landmark decisions in both the High Court and Court of Appeal.

CASE STUDY - Howes Percival advised HMRC in a long running claim brought against the Danish Company Sunico A/S together with connected companies and its Directors. HMRC claim that the defendants were all engaged in missing trader intra-community fraud and have caused losses to HMRC in excess of £40 million. The court considered part of HMRC's claim at trial and in April 2013 delivered a judgment finding the defendants guilty of an unlawful means of conspiracy and ordered that damages be paid to HMRC in the sum of £1.2 million together with interest and costs. The defendants attempted to appeal the High Court's decision but that appeal was dismissed in November 2014.



ALISON KIRBY

Partner

01603 281956

alison.kirby@howespercival.com



Alison is the client partner for HMRC and has 20 years of extensive trial experience mainly in the High court, and also including trials relating to the fraudulent reclaiming of VAT conducted in the First Tier Tax Tribunal. As such she is experienced in the pressure and tactics of multi-million pound litigation. Alison has wide experience of acting for HMRC in relation to complex debt claims to include applications for the appointment of Provisional Liquidators, Freezing Injunctions and Search and Seizure Orders.



MICHAEL GREEN

Partner

01223 791001

michael.green@howespercival.com



Michael has over 20 years' experience of dealing with large complex commercial disputes with a particular emphasis on company/shareholder disputes, warranty claims, partnership advice, restraint of trade, technology claims, professional negligence claims, contract disputes, contentious probate and insolvency.



ROSE SUNTER

Partner

020 7405 4600

rsunter@sharpepritchard.co.uk



Rose has long experience of dealing with complex litigation in the High Court, Court of Appeal and a variety of tribunals. Her experience includes administrative and regulatory law, local authority housing litigation, consumer and planning prosecutions, licensing, data protection and freedom of information issues and challenges, standards challenges, human rights, commercial disputes, judicial review, child and adult social services, mediation and alternative dispute resolution.

OUTSOURCING / INSOURCING

We have extensive experience and knowledge in this area of law and support our clients through the entire procurement process through to completion. We deal regularly with complex IT outsourcing projects for both the public and private sector, helping to ensure our clients get the very best terms from their contract. ICT outsourcing has many advantages, both financially and as a driver of service levels.

CASE STUDY - Sharpe Pritchard advised on a £200 million shared services project for Hertfordshire County Council, involving a service contract and a framework agreement for other public authorities in Hertfordshire to use.



SALLY STOCK

Partner

+44 (0) 20 7405 4600

sstock@sharpepritchard.co.uk



Sally specialises in advising the public sector on a variety of complex service delivery models including major outsourcing contracts and smaller scale procurements. She regularly advises on all aspects of public procurement, including risk transfer and other issues which arise during the procurement and contract preparation process.



RAECHEL SLATTERY

Senior Associate

020 7405 4600

rslattery@sharpepritchard.co.uk



Raechel is a contracts specialist, who advises public bodies on all aspects of procurement including vires, advertising requirements and procurement routes. She has extensive experience in a wide range of outsourcing projects and large-scale contracts including in the fields of project and programme management, legal services, learning and development provision, exhibition services; catering; and occupational health services.



JONATHAN WHALL

Senior Associate

020 7405 4600

jwhall@sharpepritchard.co.uk



Jonathan is a senior associate in the Projects team at Sharpe Pritchard. He specialises in advising on large projects including major outsourcing and insourcing. He also advises on a wide variety of commercial contracts. He has experience in advising on projects in a range of sectors including ICT and university accommodation.

PARTNERSHIPS

We advise on all aspects of partnership law and have a team of specialists who routinely advise clients on limited partnerships, limited liability partnerships and general partnerships. The team have a particular specialism in advising on the terms in relation partnership agreements. Our clients include high net worth individuals, listed and unlisted multinational organisations, quasi-government organisations in various sectors. We also provide the partnership legal services to local SMEs and start-up fast growing companies.

CASE STUDY - Howes Percival advised a medical practice in relation to partnership and business issues related to the practice joining forces with a local CIC which is a leading community based NHS and social care provider.



NATHAN HORTON

Partner

01603 580098

nathan.horton@howespercival.com



Nathan is an experienced corporate and commercial lawyer with considerable experience of helping businesses, their owners and those that invest in them achieve their commercial aims, whether those are selling, merging or funding their businesses, acquiring other businesses or entering into commercial arrangements. Nathan also advises healthcare professionals and providers (including GPs, pharmacists, dentists, hospital consultants and care home operators) on their business needs, including partnership/LLP arrangements, mergers and collaborations, commercial contracts, sales and disposals and mergers/ restructurings.



GERALD COULDRAKE

Senior Partner and

Head of Corporate and Commercial

01604 258011

gerald.couldrake@howespercival.com



Gerald is an experienced Corporate and Commercial advisor. He advises on sales and purchases of businesses, joint ventures and commercial contracts. He advised and is company secretary of both the British Racing Drivers Club (owners of Silverstone Circuit) and the Guards Polo Club (based at Windsor Great Park). Gerald has been a partner at Howes Percival since 1989.



KATHERINE CEREGHINO

Associate

0116 2473540

katherine.cereghino@howespercival.com



Katherine is an associate solicitor in the Corporate, Commercial and Banking team. Katherine advises on company disposals and acquisitions, share arrangements, company restructuring and reorganisations and company finance documentation.

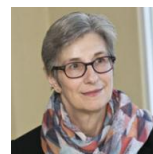
PENSIONS

In connection with our top-rated procurement team, our pensions team are well versed in advising on the pensions implications of staff transfers under the Transfer of Undertakings (Protection of Employment) Regulations.

In connection with our top-rated procurement team, our pensions team are well versed in advising on the pensions implications of staff transfers under the Transfer of Undertakings (Protection of Employment) Regulations.

We have additionally prepared, advised on and negotiated the terms of numerous pension scheme admission agreements and are familiar with a variety of 'pass-through' and risk-sharing agreements, including 'cap and collar' arrangements. In addition, we have acted for both transferring employees and many admission authorities in relation to admission agreements under the Local Government Pension Scheme.

CASE STUDY - Sharpe Pritchard advised the London Fire and Emergency Planning Authority on the procurement, drafting and negotiation of a contract with a private sector contractor for the administration of the Fire Fighters Pension Schemes and Compensation Scheme.



ROSE SUNTER

Partner

020 7405 4600

rsunter@sharpepritchard.co.uk



Rose acts for employers in the public and private sectors, including local government, and sometimes for employees on a full range of employment related issues. Her work includes negotiating and advising on pensions arrangements and transfers in outsourcing insourcing and shared service situations.

PUBLIC PROCUREMENT

Our public procurement practice covers all aspects of domestic and EU public procurement law and have advised on some of the largest, most high profile and complex government procurement projects and programmes. We have extensive experience acting for UK Central Government departments, NDPBs, ALBs, UK utilities, local authorities, regulators and judiciary on major public procurement exercises. We have significant experience of advising on PCR and UCR procurements.

CASE STUDY - We acted for a statutory waste disposal authority established to manage waste arising in the West London area. The **£1.4 billion** project is a complex multi-site PPP project with a 25 year concession. It was procured using the competitive dialogue procedure and achieved an efficient financial close following an extremely effective competition and a price well below authority's affordability limit. We provided a full legal service for all aspects of the project from initial strategy to financial close



TIM FARR
Partner
020 7405 4600
tfarr@sharpepritchard.co.uk



Tim specialises in procurement and strategic public private partnerships. His clients include private and corporate companies, central government departments, local authorities, utilities, registered housing providers and voluntary bodies. Tim advises on PCR and UCR procurement regimes.



ANNIE MOY
Partner
020 7405 4600
amoy@sharpepritchard.co.uk



Annie specialises in public procurement and commercial contracts, with particular experience in social infrastructure schemes. Annie also advises on strategic technology projects, social care, regeneration schemes, PFI and PPP projects. With a pragmatic and commercial approach to advising on a project, Annie works closely with clients in order to ensure that their objectives are met. She is an experienced negotiator and has extensive first-hand experience of procuring a wide range of public sector contracts.

PROPERTY, REAL ESTATE & CONSTRUCTION

We have a highly regarded real estate department, specialising in property work for the public sector, including development agreements for public buildings, commercial leases of shops and offices and major regeneration projects.

CASE STUDY - Sharpe Pritchard acted for a public body on its high profile and political acquisition and development of a site for its new Central London office building which also incorporated a leisure centre and swimming pool, public library and customer service centre. Given the sums involved and the need to apportion major infrastructure costs across the wider estate, the funding arrangements for this transaction were complex.



JO PICKERING
Partner and Head of Real Estate
020 7405 4600
jpickering@sharpepritchard.co.uk



Jo is a property lawyer with over 20 years' experience of all areas of property law and is head of the firm's real estate department. Jo specialises in particular in large scale and complex development and regeneration projects. Jo regularly advises public sector bodies on large scale and high profile sales and purchases as well as redevelopment and regeneration projects.



MICHAELA HENSON
Partner
01223 791019
michaela.henson@howespercival.com



Michaela is a partner with over 20 years' experience in property development, advising on real estate strategy and day to day issues for landowners, colleagues operational businesses, charities and technology companies nationwide. She advises on land development projects including acquisitions and disposals.



SIMON MURPHY
Partner
01223 791020
simon.murphy@howespercival.com



Simon advises on contentious property issues encompassing residential, commercial and agricultural land. Simon spends most of his time advising on asset management issues including possession claims, the forfeiture of leases, dilapidations, service charge disputes and lease interpretation. He also advises on trespass, overage, rights of light, rights of way, adverse possession and enfranchisement.

TAX

We have access to a team of specialist through the consortium that have expertise in handling tax disputes that might arise with HMRC. This includes dealing with difficult audit issues and taking issues through the formal litigation process if necessary.

With proven experience in dealing both direct and indirect tax disputes at all levels in the UK courts and European Court of Justice and has particular experience of public law judicial review issues. Senior lawyers in our consortium have access to deep technical and industry specialists that allow us to provide depth of expertise through a seamless blended legal and tax team that brings the best of both worlds - more than just an accountancy firm or a law firm can offer in isolation.

CASE STUDY - PwC assisted a large multinational with complex tax audit involving the transfer of intellectual property. Cross-border information requests and dealing with Revenue authorities in different jurisdictions. This included navigating HMRC's complex governance procedures. The outcome of this was the resolution of the dispute, the ability to restructure and the development of a successful relationship with HMRC.



MARK WHITEHOUSE

Partner and Head of the Tax Litigation
07715 705102

m.whitehouse@pwc.com



Mark specialises in handling disputes with HM Revenue & Customs (HMRC) with a focus on direct tax. He acts for clients who have tax disputes before the Tax Tribunals and Higher Courts, but a large part of his practice is working with clients and HMRC to settle tax disputes before they reach Court. He is an accredited mediator and has been involved in a number of very high-value negotiations settling some billion pound plus disputes.



DAVID ANDERSON

Partner
07715 211529

david.s.anderson@pwc.com



David specialises in all aspects of indirect tax - VAT, customs duty, excise duty, hydrocarbon oils, landfill tax, aggregates levy and other environmental taxes. He has represented appellants in courts all the way to the Court of Justice of the European Union in a wide variety of industry areas.

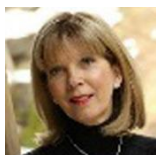


OPTIONAL LEGAL SPECIALISMS

EU

Our lawyers have extensive experience advising on EU law matters covering a diverse range of topics, with notable expertise in trade and financial sanctions, export control, customs, free movement of goods and services, public procurement, data protection and consumer safety regulations. They have experience of damages actions, debt recovery and public procurement litigation proceedings before the European and national courts. We also represent clients in standalone private litigation, in which they are able to take advantage of our unique combination of EU law and litigation experience, either to provide specialist advice and opinions, or to manage the dispute as a whole. Our consortium has extensive experience in representing parties under investigation and includes the World ECR Export Control (Europe) Law Firm of the Year 2017 and World ECR Sanctions (Europe) Law Firm of the Year 2017.

Our global Immigration team can provide a range of UK and EU specialist immigration services and includes the largest global network of in-house immigration specialists of more than 1,500 specialists in 154 countries. This includes teams in all EU Member States and excellent relationships with governments and immigration authorities globally. We are consulted regularly by the Home Office on UK immigration policy and we are in a prime position to advise public sector bodies on policy reform, compliance, practical implementation and enforcement.



JULIA ONSLOW-COLE

Partner, Legal Markets Leader and
Head of Global Immigration
07872 640012

julia.onslow-cole@pwc.com



Julia is a key expert in PwC's Brexit Taskforce and was appointed to the Mayor of London's Brexit Advisory Group. She has represented business at the Prime Minister's immigration stock take meeting and acted as an adviser to the Home Office on business, investment and growth. She has been liaising with Government and Business on immigration outcomes subsequent to the EU Referendum. Julia is co signatory of the ground breaking PwC / London First report on the impact of migrant workers in London released in March 2017 and a co signatory of the report on Regional Visas by PwC commissioned by the City of London Corporation.

Julia has provided advice to Brexit advisory committees covering a range of areas including financial passporting, people and social security as result of Brexit. This advice was provided to Number 10, the Home Office and the Department for Exiting the European Union. Julia leads PwC's unique crisis management services that PwC rendered during the Arab Spring and Algeria hostage crisis. Julia led the emergency evacuation of oil and gas sector employees from Egypt, Algeria and Libya; arranging special carrier exemptions and visa waivers to allow non-visa nationals to enter and remain in the UK whilst awaiting relocation to their home country / resolution of the crisis.

PLANNING

We provide practical, no-nonsense solutions which are always focused on meeting your commercial objectives. We can assist you in strategically planning for development projects and help you develop strategies to secure planning permission as soon as possible and at the same time minimising the risk of successful legal challenge to planning permissions.

Our planning lawyers are experienced in drafting and negotiating section 106 agreements of varying complexity, advising on the community infrastructure levy, the National Planning Policy Framework, the national planning policy guidance, local plan policies, Environmental Impact Assessment Regulations, listed building and conservation area issues, appropriate use of planning conditions, certificates of lawful use and development, and enforcement matters.

CASE STUDY - Sharpe Pritchard was instructed to act on behalf of Cambridge City Council, Cambridgeshire County Council and South Cambridgeshire District Council in relation to the planning aspects of the development including the completion of the substantial Section 106 legal agreement that was required.



PAUL WOOTTON

Partner
01603 580075

paul.wootton@howespercival.com



Paul is head of the Howes Percival Planning Team and advises on all aspects of planning and compulsory purchase law. Paul acts for private and public sector clients and has advised on some of the largest regeneration projects in England.



CHRIS MAY

Partner
0116 247 3523

chris.may@howespercival.com



Chris advises on all aspects of town planning and development law. He has extensive experience in the coordination of development proposals, including student accommodation, motorway service areas and residential development at regeneration sites and greenfield sites, and in the preparation and negotiation of Planning Obligations.



DENISE STEPHENSON

Partner
020 7405 4600

dstephenson@sharpepritchard.co.uk



Denise specialises in town and country planning law, with extensive experience of major regeneration projects. She has also negotiated many section 106 agreements and highway agreements for large redevelopment projects, wind farms and infrastructure projects. She has advised on various elements arising out of negotiations including affordable housing and viability issues, securing open space areas and community facilities for public use.

PROJECTS

Sharpe Pritchard has one of the UK's largest and busiest dedicated PPP and PFI practices, advising the public sector on a wide range of complex and innovative projects worth billions of pounds, deploying complex negotiated or competitive dialogue procurements. We have extensive experience of advising on a range of different types of agreements and strategies from straightforward bipartite agreements to framework agreements, and major PPP procurements. The fact that we have advised on so many different forms of contract and procurements means we add considerable value for our clients. Our lawyers have developed some of the most innovative models for public sector financing of major projects.

CASE STUDY - The FITS Programme for the MOJ involved the staggered procurement and award of 9 separate major IT contracts (Service Integration and Management (SIAM), data centre, end user computing, WAN and LAN, voice, video & network integration, protective monitoring, print, hosting and application maintenance & support. We advised on all aspects following our appointment.



JULIA RUDIN
Managing Partner
020 7061 5952

jrudin@sharpepritchard.co.uk



Julia specialises in advising the public sector on PFI and PPP projects and major outsourcing and shared services contracts, administrative and technology law. Julia regularly advises on large scale and complex public procurements.



PAUL O'SULLIVAN
Partner
020 7405 4600

posullivan@sharpepritchard.co.uk



Paul is a highly experienced contracts solicitor and has particular expertise in EU procurement and state aid law. He advises in complex and often politically sensitive public sector project work, including in the health & social security, highways & transportation, education and social services sectors across a wide range of delivery models and contract types.



STEVE GUMMER
Senior Associate
020 7405 4600

sgummer@sharpepritchard.co.uk



Steve has a range of projects experience working for lenders, sponsors, regulated utilities and public sector bodies. He specialises in complex infrastructure projects, from renewable energy projects (including energy from waste, offshore wind and nuclear projects) to sewage and waste transactions.

RESTRUCTURING AND INSOLVENCY

Alongside advice on formal insolvency proceedings, we advise businesses suffering financial stress – from sole traders through to large public limited companies. Our specialist lawyers are used to advising on refinancing and restructuring and providing advice to directors on their options and obligations.

CASE STUDY - Howes Percival made an application on behalf of HMRC to appoint a provisional liquidator over the affairs of Parkwell Investments Limited. The tax loss was £7,764,476.14. The Court appointed a provisional liquidator over the affairs of Parkwell and then the directors made an application to dismiss the appointment of the provisional liquidator. The application was hotly contested with evidence filed on behalf of HMRC, the directors and the provisional liquidator in several rounds. A technical expert witness was also instructed by HMRC. Following a six day hearing, Judgment was awarded in favour of HMRC together with an Order that the directors show cause why they should not pay HMRC and the provisional liquidator's costs of their failed application.



ALISON KIRBY
Partner
01603 281956

gerald.couldrake@howespercival.com



Alison undertakes work on behalf of institutional clients in relation to cases involving civil claims for fraud and to pursue actions both within the UK and outside of the jurisdiction to recover assets. Alison has substantial background knowledge of general commercial litigation.



MORRIS PEACOCK
Partner
01603 281985

morris.peacock@howespercival.com



Morris qualified in 1996 and is an experienced litigation solicitor with expertise in insolvency and directors disqualification. He has acted for the Insolvency Service for over 17 years, has been the partner responsible for investigation matters since 2004 and the client partner for all Insolvency Service matters since 2008.



CARL MIFFLIN
Partner
0116 247 3577

carl.mifflin@howespercival.com



Carl is Head of Insolvency at Howes Percival and specialises in all aspects of corporate and personal insolvency, in particular advising businesses and business owners on their duties, options and responsibilities when facing financial difficulties and acting for Insolvency Practitioners on insolvency appointments, business sales, investigations and asset recovery.

EDUCATION LAW

We have a dedicated unit focusing on advising the education sector on procurement, governance, strategy and infrastructure projects. This work spans major development and construction and other smaller contract and property instructions and our specialists therefore have experience of both the national issues and suites of documentation as well as wider issues within the public sector.

CASE STUDY - Sharpe Pritchard is retained by the ESFA (Education and Skills Funding Agency), an executive agency of the Department for Education, under the CCS framework, to advise and assist in its procurements of training providers to deliver adult education and apprenticeship training for non-levy paying employers. Sharpe Pritchard's role has included an end to end service advising on the procurement strategy, evaluation and risk management.



ANNIE MOY

Partner

020 7405 4600

amoy@sharpepritchard.co.uk



Annie is immensely experienced in education infrastructure and construction projects and leads Sharpe Pritchard's work on academy and school projects, with deep expertise and knowledge of the public sector construction market in this field. She has made academy conversions one of the firm's specialist areas and is adept at handling high value, high profile projects, including land transfers, pensions, lifecycle contracts, governance matters and data protection.



DANIEL BANTON

Partner

0116 247 3510

daniel.banton@howespercival.com



Dan heads up the Education Team at Howes Percival. Dan has advised on the successful conversion of over 250 academies, all with a particular specialism in acting for large multi-academy trusts. Dan's work with academies and multi-academy trusts includes development of governance structures, drafting schemes of delegation as well as providing practical change management advice. More recently Dan has advised on matters involving the re-brokering of academies, focusing on the legal aspects of the transfer (including assets and liabilities) from one multi-academy trust to another.

CHILD LAW

Our specialists never lose sight of the fact that the welfare of the child is the paramount concern in all disputes affecting children. Early intervention in the form of clear advice can be crucial in preventing issues from escalating. Our consortium has experience in all Child Law proceedings including emergency applications. We focus on resolving conflict, supporting alternative forms of dispute resolution and managing cases cost effectively, conducting our own advocacy where appropriate. We can assist you in these difficult times to ensure that disruption and confusion for your children is kept to a minimum and a workable agreement can be reached. We will assist in making suitable arrangements which protect and promote your children's relationship with you and the other parent.

CASE STUDY - Howes Percival guided step-parents and those seeking overseas adoption upon the legal framework and its application to their status. Howes Percival assisted in completion of application forms and considering reports, and representation at court where required. Ultimately this achieved stability and security for the child during its minority; full integration into the family of the adoptive parent.



AMY WALPOLE

Partner

01603 580083

amy.walpole@howespercival.com



Amy has expertise in all areas of Child Law, representing parents and family members on issues such as adoption, care proceedings, residence and contact, and has significant experience of making emergency applications to court. Her recent experience includes: Adoption, Special Guardianship Orders, Child Arrangements Orders, Declarations of Parentage, Schedule 1 Children Act 1989 and Prohibited Steps/Specific Issue Applications to include removal from the jurisdiction and change of name.



JUSTINE FLACK

Partner

0116 247 3564

justine.flack@howespercival.com



Justine has expertise in all areas of Child Law including advising on financial matters and past experience representing parents, grandparents and Guardians in care proceedings. She has dealt with residence, contact and recovery of children, sometimes on an emergency basis. Her recent experience includes: Advising upon Child Arrangement Orders, Special Guardianship Orders, Schedule 1 Children Act 1989, Prohibited Steps and Specific Issue Applications to include removal from the jurisdiction, change of child's name and prohibiting contact with person considered to be a risk.

ENERGY AND NATURAL RESOURCES

Sharpe Pritchard is a leading firm in the energy and renewables sector. Since completing our first waste to energy contract in 1995, our team has advised on some of the most significant and complex infrastructure deals to close in the last decade including 18 PFI and PPPs. The team has an enviable reputation nationally. We are familiar with all the latest developments in renewable energy technology, including energy from waste (EfW); combined heat and power (CHP); decentralised energy; photovoltaic and renewable heat initiatives; and on shore wind turbines.

CASE STUDY - Sharpe Pritchard represented a local planning authority in respect of wind farm projects and securing the appropriate section 106 planning obligations (Yelvertoft, Harrington, Winwick, Watford Lodge, Kelmars and Lilbourne). Also advised Eastbourne Borough Council's framework for solar photovoltaic panels for local authority housing and commercial stock.



STEVE GUMMER

Senior Associate

020 7405 4600

sgummer@sharpepritchard.co.uk



Steve has a range of projects experience working for lenders, sponsors, regulated utilities and public sector bodies. He specialises in complex infrastructure projects, PPP/PFI projects and renewable energy projects (including energy from waste, offshore wind and nuclear projects) to sewage, transport and water transactions. Steve advises on commercial structures, regulatory arrangements, delivery models and projects documentation. He advises on a range of procurement and construction matters and is familiar with the market leading standard forms of contract – including FIDIC, JCT and NEC.



JULI LAU

Associate

020 7405 4600

jlau@sharpepritchard.co.uk



Juli is a public procurement and contracts specialist with particular expertise in infrastructure projects, covering the fields of waste, energy and utilities. She has acted for public authorities on a number of PPP/PFI projects and is experienced in advising on industry standard construction contracts, commercial contracts, and public procurement law.

FOOD, RURAL AND ENVIRONMENTAL AFFAIRS

We have a planning and environmental team with a high level of experience of advising on issues relating to land use. We have frequently acted for local authorities in relation to the enforcement of laws to control pollution. We have acted both in relation to criminal proceedings and in obtaining injunctions to restrain the unlawful use of land. We are leading experts in relation to waste and recycling. We have acted in many of the high value waste projects in recent years and have also provided advice and solutions for authorities in relation to their waste and recycling functions.



RAECHEL SLATTERY

Senior Associate

020 7405 4600

rslattery@sharpepritchard.co.uk



Raechel is a contracts specialist, who advises public bodies on all aspects of procurement including vires, advertising requirements and procurement routes. She previously worked for Defra and has extensive experience in a wide range of outsourcing projects and large-scale contracts including in the fields of waste, transport and the environment, project management, legal services, learning and development provision, exhibition services; catering; and occupational health services.



LYNNE GIRARD

Senior Legal Executive

020 7405 4600

lgirard@sharpepritchard.co.uk



Lynne is a procurement lawyer with a particular interest and expertise in the waste sector. She has acted in projects relating to waste treatment facilities, household waste recycling centres and has frequently advised authorities on their responsibilities in relation to waste and recycling.

FRANCHISE LAW

Our team advises on a wide range of commercial and corporate matters for our clients. Our corporate team offers support to clients on franchising and quasi-franchising models and associated brand protection, as well as on competition and state aid, restructuring, licence agreements and commercial contracts.

Our Corporate and Commercial team can assist franchisors, franchisees and developers on dispute avoidance and resolution.



NATHAN HORTON

Partner

01603 580098

nathan.horton@howespercival.com



Nathan is an experienced corporate and commercial lawyer with considerable experience of helping businesses, their owners and those that invest in them achieve their commercial aims, whether those are selling, merging or funding their businesses, acquiring other businesses or entering into commercial arrangements.



RACHEL MCCULLOUGH

Associate

01908 672682

rachel.mccullough@howespercival.com



Rachel advises on a full range of corporate and commercial issues including commercial contracts (supply of goods and services, manufacturing, franchise, agency and distribution), governance and structure, commercial risk management, due diligence, commercial structure arrangements with third parties, partnership, collaboration and joint venture arrangements, business purchases and bespoke and transactional arrangements.



BHAVANDEEP SAHOTA

Solicitor

0116 247 3531

bhavandeep.sahota@howespercival.com



Bhavandeep has experience in drafting, interpreting and providing advice on a broad range of commercial matters, including: standard terms and conditions, supply of goods and services agreements, bespoke agreements, equipment hire agreements, agency and distribution agreements, manufacturing agreements, franchising

HEALTH AND HEALTHCARE LAW

Sharpe Pritchard's solicitors have experience in advising PCTs, CCGs, other NHS bodies as well as local authorities. A number of our lawyers have worked in-house in the public sector and specialised in health and social care services.

We are on both the NHS Legal Framework and the HealthTrust Europe Legal Services Framework Panel and regularly advise public sector bodies on the use of and application of standard conditions and call off contracts – both from the point of view of the purchasing organisation and the supplier – and also advise on the use of the Department of Health's non-mandated conditions for public health contracts.

CASE STUDY - Sharpe Pritchard assisting a number of local authorities in the transfer of public health functions and abolition of the PCTs following the bringing into force of the Health and Social Care Act 2012. Also advised on the outsourcing of four nursing homes and two residential care homes for Westminster City Council.



SALLY STOCK

Partner

+44 (0) 20 7405 4600

sstock@sharpepritchard.co.uk



Sally specialises in advising the public sector on a variety of complex service delivery models including major outsourcing contracts and smaller scale procurements. She regularly advises on all aspects of public procurement, including risk transfer and other issues which arise during the procurement and contract preparation process. Sally has acted in numerous health and healthcare projects.



DEBORAH DOWN

Senior Associate

+44 (0) 20 7405 4600

dtdown@sharpepritchard.co.uk



Deborah advises on all aspects of public procurement law and projects with a particular interest in health and social care. Deborah has an in-depth understanding of the health and adult care sectors. She advises on implementation of effective project management across different specialisms in compliance with internal constitutional requirements.

LIFE SCIENCES

We have experience of providing biotechnology, spin-out and pharmaceutical businesses with insight to help you to move forward and develop your businesses in a commercial way. We support small and medium sized technology businesses in the UK and overseas to reach new markets and grow their business. Our clients include high technology businesses and science establishments including those operating within in the education, life sciences, scientific research and drug development sectors. We act for scientists, academics and research parks in bio chemical engineering, high technology, neuroscience, chemistry and bio technology. We also have sector expertise in agri technologies and agricultural biologicals.



ROBERT COLMAN

Partner

01603 281982

robert.colman@howespercival.com



Robert has considerable experience in all aspects of corporate transactional work. Robert specialises in mergers, acquisitions and investment transactions including expertise in dealing with asset sales arising out of insolvency situations.



GERAINT DAVIES

Partner and Head of Litigation

01908 872203

geraint.davies@howespercival.com



Geraint heads up the litigation team at Howes Percival and has over twenty years' experience in dealing with high-value commercial and property litigation disputes. He acts on behalf of a wide range of commercial clients, ranging from major PLC's to owner managed businesses. He regularly deals with complex High Court litigation as well as alternative dispute resolution including mediation. He has significant experience in advising and defending clients in regulatory matters, particularly health and safety.



MATTHEW TALBOT

Partner

0116 2473514

matthew.talbot@howespercival.com



Matthew specialises in all areas of UK and European Intellectual Property law, particularly contentious matters. He advises clients regarding trademarks, copyright, design rights, passing off, patents, European food protection and defamation. He also has substantial experience in IT disputes and has frequently appeared before the English Courts, the European Court of Justice and the UK and European Patent Offices.

TELECOMMUNICATIONS

With renowned expertise in the procurement of telecommunications projects Sharpe Pritchard is regularly approached for advice from central and local government bodies, emergency services authorities and private telecoms companies. We have a thorough knowledge of this sector with regards to regulation, commercial matters and transactions.

We have worked with many clients on high-profile projects having an expert understanding in network infrastructure and strong working knowledge of existing and new technology. This includes expertly negotiating and drafting complex telecommunications contracts with our in-depth knowledge in telecommunications regulatory law both in the UK and the EU. Our instructions often require us to advise on the state aid implications of telecommunications projects, to ensure that projects do not constitute unlawful state aid. Our expertise also runs to advising and acting in matters of appeals under the Communications Act, injunctions and judicial review. In addition, we are well versed in the property and planning issues which arise on telecommunications matters.



GEMMA TOWNLEY

Partner

020 7405 4600

gtownley@sharpepritchard.co.uk



Gemma is a partner in the technology and data law team and specialises in advising on public sector procurement and a wide range of complex contracts. Gemma advises on public procurement issues at all stages of the process, and is regularly instructed on data protection, freedom of information and intellectual property rights. Gemma regularly drafts tender documentation and undertakes commercial contractual negotiations for her clients.



JULIA RUDIN

Managing Partner

020 7061 5952

jrudin@sharpepritchard.co.uk



Julia specialises in advising the public sector on PFI and PPP projects and major outsourcing and shared services contracts, administrative and technology law. Julia regularly advises on large scale and complex public procurements. These cover a wide range of legal issues including intellectual property rights and software licensing, data security, risk transfer, limits on liability and other issues which arise during the contractual process.

CHARITIES LAW

We advise charities on all aspects of the law and have a wealth of experience in working with charities and social enterprises of all sizes. Many of our clients have family charities or are involved with charities as trustees. Our specialists in charity law are experts in navigating the legal demands faced by this sector.

We can assist charities and their trustees with The formation of new charities, whether as companies, trusts or Charitable Incorporated Organisations (CIO's); transactional matters, such as leases and property sales, where it is essential that the Charities Act requirements are followed; restructuring or changes to governing documents, including applications to the Charity Commission, where approval is needed; and mergers and joint working arrangements including the associated property and assets transfers.



CATHERINE SCOTT

Partner

01603 281963

catherine.scott@howespercival.com



Catherine deals with landed estates, sales and purchases of farms, estates and other rural property, farming partnerships, internal family reorganisations and estate planning and trust related work and other matters relating to farms and estates including landlord and tenant work in relation to agricultural and other rural tenancies. She is a Charity Trustee and also a Trustee of a number of client family trusts.



TOM LAWRENCE

Partner

01603 580077

tom.lawrence@howespercival.com



Tom has over a decade of experience providing sensible and commercial solutions to business owners and their families on a wide range of complex succession and estate planning issues including Will drafting, together with associated tax advice, the formation of Trusts, wealth protection, administration of Estates and Powers of Attorney.

HEALTH & SAFETY LAW

Our acclaimed Health and Safety team has an excellent reputation for top quality legal and strategic advice, commercial awareness, pragmatism, outstanding court work and dedication to getting clients the best results.

We are highly regarded for our work in all sectors including minerals and extractives, construction, manufacturing, service industries, healthcare and retail. We have acted in cases of the utmost seriousness, including corporate and gross negligence manslaughter cases, and matters involving multiple fatalities. Our team advises and assists those under investigation, subject to enforcement action or prosecution by health and safety authorities - including HSE, local councils, environmental health, the police, and fire services. We also advise and assist clients in identifying and complying with their duties and responsibilities under health and safety law - helping them avoid incidents and problems in the first place.



ALAN MILLBAND

Partner

0116 247 3521

alan.millband@howespercival.com



Alan is a leading regulatory and business defence lawyer with considerable experience across the regulatory spectrum, particularly in health safety and environmental matters. He advises on all kinds of regulatory compliance issues, and represents clients who are subject to action by enforcing authorities (such as HSE, Local Authorities, Environment Agency, Police, and CQC). He is an extremely effective magistrates' and coroners' court advocate as well as an entertaining and engaging public speaker.



GERAINT DAVIES

Partner

0116 247 3506

geraint.davies@howespercival.com



Geraint heads up the litigation team at Howes Percival and has over twenty years' experience in dealing with high-value commercial and property litigation disputes. He acts on behalf of a wide range of commercial clients, ranging from major PLC's to owner managed businesses. He regularly deals with complex High Court litigation as well as alternative dispute resolution including mediation. He has significant experience in advising and defending clients in regulatory matters, particularly health and safety.

LICENSING LAW

We have extensive experience in acting for local authorities in relation to licensing matters. This includes dealing with cases relating to public entertainment licensing, street trading licences and premises licences. We have also advised a trading association representing bookmakers in relation to the statutory regime relating to gambling. We act for the Pubs Code Adjudicator and we have members of staff working closely with them as secondees.



MARI ROBERTS

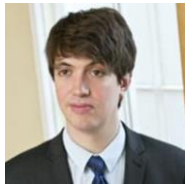
Senior Associate

020 7405 4600

mroberts@sharpepritchard.co.uk



Mari is a litigation lawyer who acts mainly for public authorities in all types of dispute resolution across all tribunals, including contractual disputes dealt with by way of adjudication or expert determination, and cases which have gone to mediation. She also has extensive knowledge of licensing and has dealt with gaming licences and a number of licensing appeals.



SIMON KIELY

Associate

020 7405 4600

skiely@sharpepritchard.co.uk



Simon is an expert prosecution lawyer with a breadth of experience of handling a wide range of regulatory and local authority prosecutions. He regularly appears in the magistrates' court. Simon also deals with civil proceedings. He works extensively for the Pubs Code Adjudicator.

TRANSPORT LAW (EXCLUDING RAIL)

We have worked on a range of nationally important infrastructure projects. We are experienced in advising on the construction and maintenance of highways. We have extensive experience of advising on projects relating to the transport infrastructure. We have dealt with a substantial number of Transport and Works Act and Development Consent Order applications.



EMYR THOMAS

Partner

0207 405 4600

ethomas@sharpepritchard.co.uk



Emyr carries out a wide range of work in connection with. He also advised on major infrastructure and transport projects (including Thames Tideway Tunnel, HS2 and Able Marine) and general public law work.



JANE CREES

Partner

0207 405 4600

jcrees@sharpepritchard.co.uk



Jane specialises in public procurement law and contracts. She regularly advises on a wide range of complex works and services contracts, including in relation to facilities management and major contracts for leisure and education facilities. She is fully familiar with the JCT and NEC3/4 suites of contracts, among other standard construction forms. She also has extensive experience of dealing with highways procurements.